



# Mid Murray Family Connections

Community Accountability Plan 2020 - 2022

*'Children in the Mid Murray enjoy positive wellbeing and emotional maturity'*

*We acknowledge the Traditional Owners, who are the First Nations Peoples of Australia, for they are and always have been the custodians of the lands and waters where we live. We pay respect to Elders past, present and emerging and strive to learn from their knowledge and wisdom. We celebrate the important role that the First Nations Peoples continue to play within our communities today.*





mid murray  
family  
connections



## Mid Murray Family Connections – Collective Impact Initiative

### Who are we?

The Mid Murray Family Connections (MMFC) Collective Impact initiative was formed in response to the 2012 Australian Early Development Census (AEDC). The Census highlighted the Mid Murray region as having the second highest proportion of developmentally vulnerable children in South Australia - 1 in 3 children. This collaboration of government and non-government agencies and passionate community members, servicing and/or living in the Mid Murray Council district, has been working together towards improving the wellbeing of children in the region.

The group recognises that this is an extremely difficult task that requires shared responsibility from all sectors of the Mid Murray community, as well as long term commitment from all stakeholders, to produce large scale and long lasting results.

This Community Plan reflects MMFC's commitment to holistically support families so that children's wellbeing is prioritised across all developmental stages. This will ensure that children are provided with the best start in life. The plan uses quality data to guide its work and evaluation and has been developed with the input of a wide range of community stakeholders.

The purpose of this Community Plan is to guide the work of the MMFC Collective Impact Initiative. It clearly states the desired outcome, the outcomes we are working towards and the strategies to be explored and implemented. As a living document, the Community Plan will require periodic review and adjustment, as progress is made.

While continuing to use AEDC data to measure and guide this work we are also moving towards turning community stories into data, as these give a localised community approach to measuring the impact we are having on our selected outcomes.

## Guiding Data:

The main source of reliable data MMFC use is called the Australian Early Development Census - **AEDC**.

This national data collection occurs every three years and focuses on the developmental health and wellbeing of all children starting school.

The AEDC is a measure of how well children and families are supported from conception through to school age. Research shows that investing time, effort and resources in children's early years, when their brains are developing rapidly, benefits children and the whole community.

Early developmental gains support children through their school years and beyond. The AEDC helps communities understand how children are developing before they start their first year of full-time school, what is being done well and what can be improved.

Communities can use the AEDC to help identify services, resources and support to meet the needs of their community and to drive partnerships like the MMFC.

There are five areas – or domains – to the AEDC:

### Physical health and wellbeing



Children's physical readiness for the school day, physical independence and gross and fine motor skills.

### Social competence



Children's overall social competence, responsibility and respect, approach to learning and readiness to explore new things.

### Emotional maturity



Children's pro-social and helping behaviours and absence of anxious and fearful behaviour, aggressive behaviour and hyperactivity and inattention.

### Language and cognitive skills (school-based)



Children's basic literacy, advanced literacy, basic numeracy, and interest in literacy, numeracy and memory.

### Communication skills and general knowledge

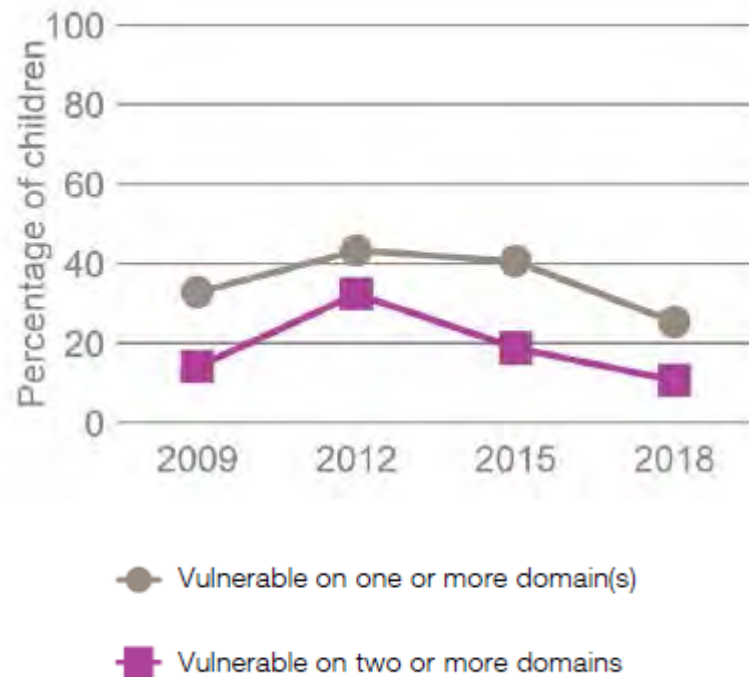


Children's communication skills and general knowledge based on broad developmental competencies and skills measured in the school context.

## What the AEDC tells us

The Mid Murray's AEDC results also show us the percentage of children who are:

- Developmentally on track, at risk, or vulnerable
- Vulnerable on one or more domain(s)
- Vulnerable on two or more domains.



## What does this mean?

- Developmentally on track children are considered to be developing well. As such, it is desirable to see the percentage of children who are 'on track' increase with each new wave of the AEDC collection.
- Developmentally at-risk children should be considered alongside changes in the percentage of children developmentally on track and developmentally vulnerable. Ideally more children will be on track as communities work to ensure all children are supported in their development.
- Developmentally vulnerable children are facing some significant challenges in their development. As such, it is desirable to see the percentage of children who are 'vulnerable' decrease with each new wave of the AEDC collection.

By comparing each data collection across the years, we can see how our kids are going.

## What is the good news?

This statistical data shows that there has been a reduction in the number of children who are developmentally vulnerable in the Mid Murray.

In **2015**, the results told us that **40.6%** of kids were vulnerable on one or more domains. In the **2018** data this shows a reduction to **25.3%**.

And our **biggest success** so far – the data told us that in 2012, there were **32.4%** of kids vulnerable on two or more domains – which is why the MMFC started. But by **2018**, this figure had dropped to **10.7%**. (see *Graph 1 below*)

**This shows that children in our region are heading in the right direction!**

In 2019 the MMFC Network met to discuss our future focus and it was decided that we were still going to target Emotional Maturity, as despite a drastic improvement; showing that this had reduced from **25.7%** in **2012** to **14.7%** in 2018, it is still our highest percentage of vulnerability across the five domains. (see *graph 2 below*) We also know that by focussing on this domain, there will be as positive flow on effect to the other domains.



## AEDC domain results for the Mid Murray



### Graph 1 Data:

Number and percentage of children for this community who are vulnerable on one or more developmental domain(s) or two or more developmental domains

	2009		2012		2015		2018		Significant change	
	n	%	n	%	n	%	n	%	2009 vs 2018	2015 vs 2018
Vulnerable on one or more domain(s)	21	32.8	32	43.2	26	40.6	19	25.3	No significant change	Significant decrease
Vulnerable on two or more domains	9	14.1	24	32.4	12	18.8	8	10.7	No significant change	Significant decrease



## Graph 2 Data:

### AEDC domain results over time for this community

		2009		2012		2015		2018		Significant change	
		n	%	n	%	n	%	n	%	2009 vs 2018	2015 vs 2018
 Physical health and wellbeing	On track	44	68.8	39	52.7	40	62.5	58	77.3	Significant increase	Significant increase
	At risk	7	10.9	14	18.9	12	18.8	10	13.3	No significant change	No significant change
	Vulnerable	13	20.3	21	28.4	12	18.8	7	9.3	Significant decrease	Significant decrease
 Social competence	On track	43	67.2	44	59.5	36	56.3	51	68.0	No significant change	Significant increase
	At risk	13	20.3	8	10.8	16	25.0	18	24.0	No significant change	No significant change
	Vulnerable	8	12.5	22	29.7	12	18.8	6	8.0	No significant change	Significant decrease
 Emotional maturity	On track	47	73.4	38	51.4	34	53.1	48	64.0	Significant decrease	Significant increase
	At risk	10	15.6	17	23.0	20	31.3	16	21.3	No significant change	Significant decrease
	Vulnerable	7	10.9	19	25.7	10	15.6	11	14.7	No significant change	No significant change
 Language and cognitive skills (school-based)	On track	52	81.3	44	59.5	44	68.8	51	68.0	Significant decrease	No significant change
	At risk	7	10.9	20	27.0	9	14.1	19	25.3	Significant increase	Significant increase
	Vulnerable	5	7.8	10	13.5	11	17.2	5	6.7	No significant change	Significant decrease
 Communication skills and general knowledge	On track	44	68.8	41	55.4	38	59.4	62	82.7	Significant increase	Significant increase
	At risk	13	20.3	19	25.7	17	26.6	11	14.7	No significant change	Significant decrease
	Vulnerable	7	10.9	14	18.9	9	14.1	2	2.7	Significant decrease	Significant decrease

## Evidence

AEDC data  
Community stories data

## Focus

Children in the Mid Murray enjoy positive wellbeing and are emotionally mature.

Mid Murray Children  
0-8 years

## Our Vision

‘Emotionally mature children in the Mid Murray Council region will show empathy, resilience, and will be focused, proactive, positive problem solvers’.

## Outcome Areas

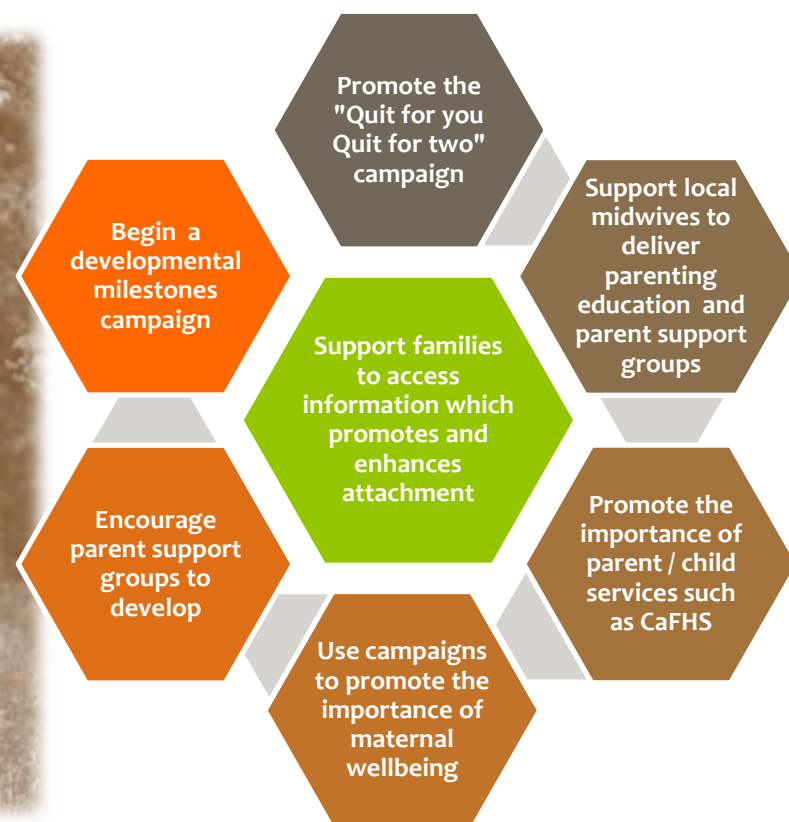
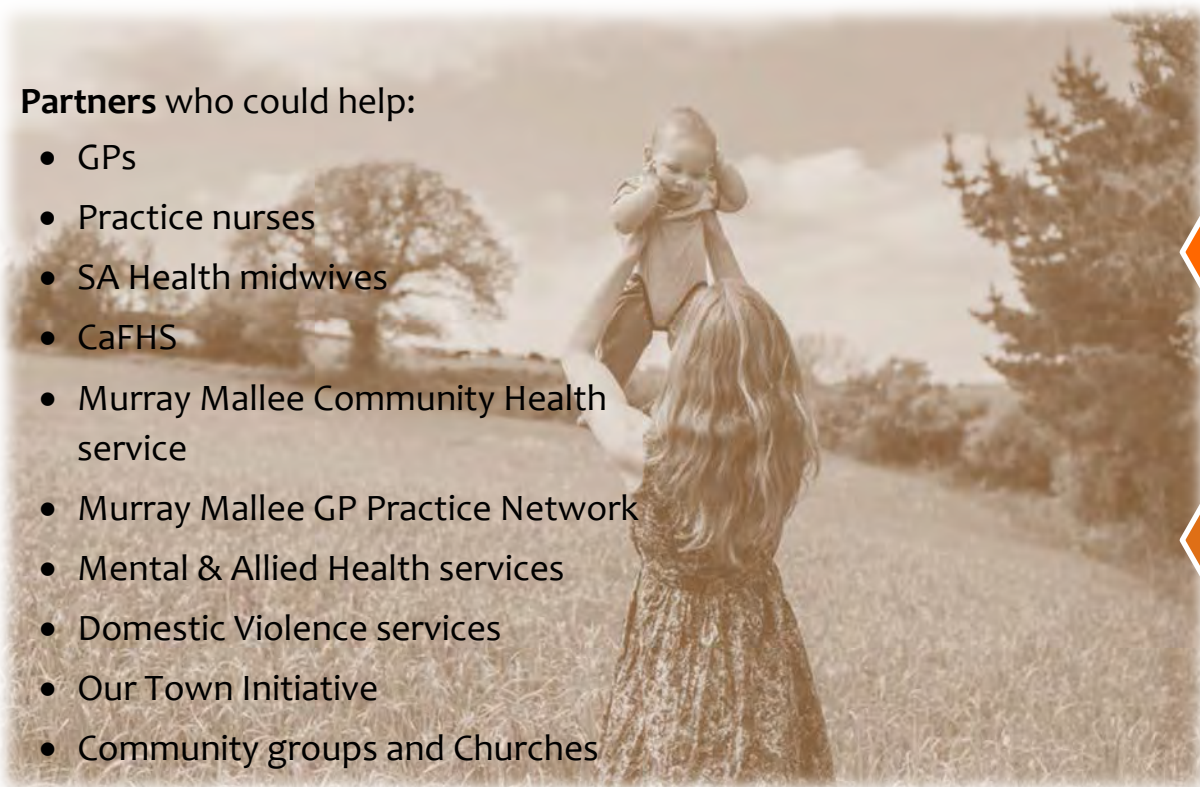
Children and their caregivers share strong attachment  
Children are emotionally resilient  
Children are engaged learners  
Children and their caregivers are safe and supported

## Outcome Area 1 - Children and their caregivers share a secure attachment – Age group: *Conception to 2 years*

### Overarching Strategies:

#### Partners who could help:

- GPs
- Practice nurses
- SA Health midwives
- CaFHS
- Murray Mallee Community Health service
- Murray Mallee GP Practice Network
- Mental & Allied Health services
- Domestic Violence services
- Our Town Initiative
- Community groups and Churches



# Overarching Strategies:



### Partners who could help:

- Kindergartens
- Playgroup Providers
- Family Day Care Providers
- Kinder-gym Providers
- Playgroup SA
- CaFHS
- Schools
- Housing SA
- Centrelink
- Domestic Violence services
- Government & Non-government service providers
- Our Town Initiative
- OSHC
- Allied & Mental Health Services
- Community groups & churches



# Overarching Strategies:

### Partners who could help:

- Schools/teachers & SSO's
- School wellbeing teams
- Parents, children & extended family
- Pastoral care workers
- Governing councils of schools
- Mentors and school volunteers
- Family support programs
- Local sporting clubs
- Community members
- Our Town Initiative
- Allied & mental health services



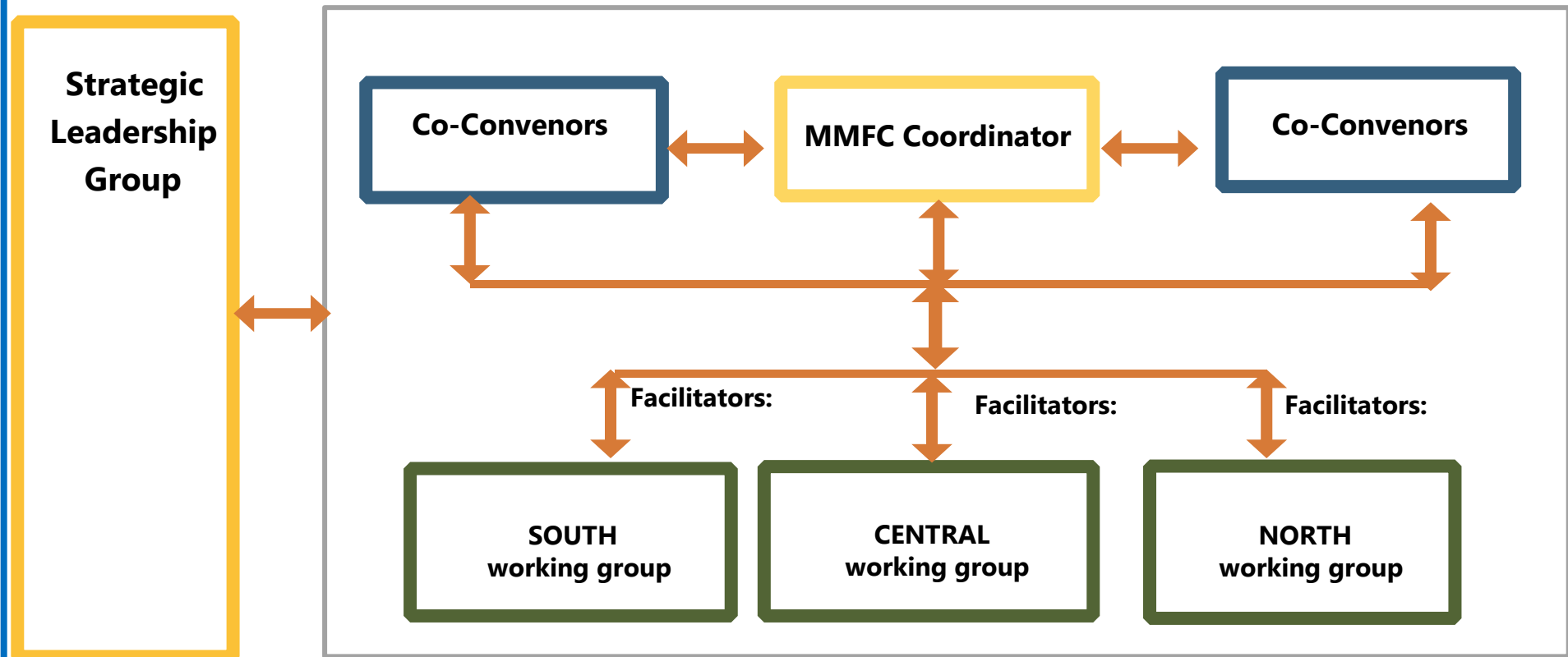
# Overarching Strategies:

### Partners:

- Everyone in the community



# Mid Murray Family Connections Network Place-based Governance Structure 2019



# Appendices







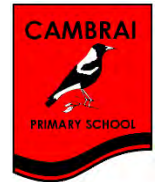
# MMFC Collective Impact - Partners & Connections



CaFHS Nurses Mid Murray Region



South Australia Department for Education and Child Development Families SA



Murray Mallee General Practice Network





# MMFC Collective Impact - Mid Murray Council Demographics

<b>Population</b> as per 2016 Census Data	<b>8642 people (stable over the last 10 years)</b> <b>Which includes 209 Aboriginal and/or Torres Strait Islander people</b> <i>Land area 627,256 hectares (6723 Km<sup>2</sup>). Population density 0.01 persons per hectare.</i>	
<b>Children in the Mid Murray Region</b>	Number of: 0 – 4 year olds: 352- 4.1 % 5 – 9 year olds: 378- <b>4.4 %</b> 10 – 14 year olds: 408- <b>4.7%</b>	
<b>Households with children</b>	<ul style="list-style-type: none"> <li>• <b>Couple family with children 684 30%</b></li> <li>• <b>One parent family 325 14.3%</b></li> </ul>	
<b>Highest level of secondary schooling completed</b>	<ul style="list-style-type: none"> <li>• <b>Year 9</b> or below: 930- 12.4 %</li> <li>• <b>Year 10:</b> 1090 – 14.5%</li> <li>• <b>Year 11:</b> 842 – 11.2%</li> <li>• <b>Year 12:</b> 833 – 11.1%</li> </ul>	<ul style="list-style-type: none"> <li>• <b>Bachelor</b> or higher degree: 506 – 6.7%</li> <li>• <b>Advanced Diploma</b> or Diploma: 423 – 5.6%</li> </ul>
<b>Employment status</b>	<ul style="list-style-type: none"> <li>• <b>Employed:</b> 3514 - <b>94</b></li> <li>• <b>Unemployed:</b> 230 – 6.5 %</li> </ul>	
<b>SEIFA - Index of Relative Socio-economic Disadvantage<sup>1</sup></b>	<ul style="list-style-type: none"> <li>• <b>Mid Murray Council:</b> 923.0 - 14<sup>th</sup> percentile</li> <li>• <b>South Australia:</b> 979.0 – 33<sup>rd</sup> percentile</li> </ul>	<ul style="list-style-type: none"> <li>• <b>Regional:</b> SA 944.0 - 20<sup>th</sup> percentile</li> <li>• <b>Australia:</b> 1001.9 - 46<sup>th</sup> percentile</li> </ul>

<sup>1</sup> SEIFA Index measures the relative level of socio-economic disadvantage based on a range of Census characteristics. The index reflects disadvantage such as low income, low educational attainment, high unemployment, and jobs in relatively unskilled occupations. A higher score on the index means a lower level of disadvantage. A lower score on the index means a higher level of disadvantage.



mid murray  
family  
connections